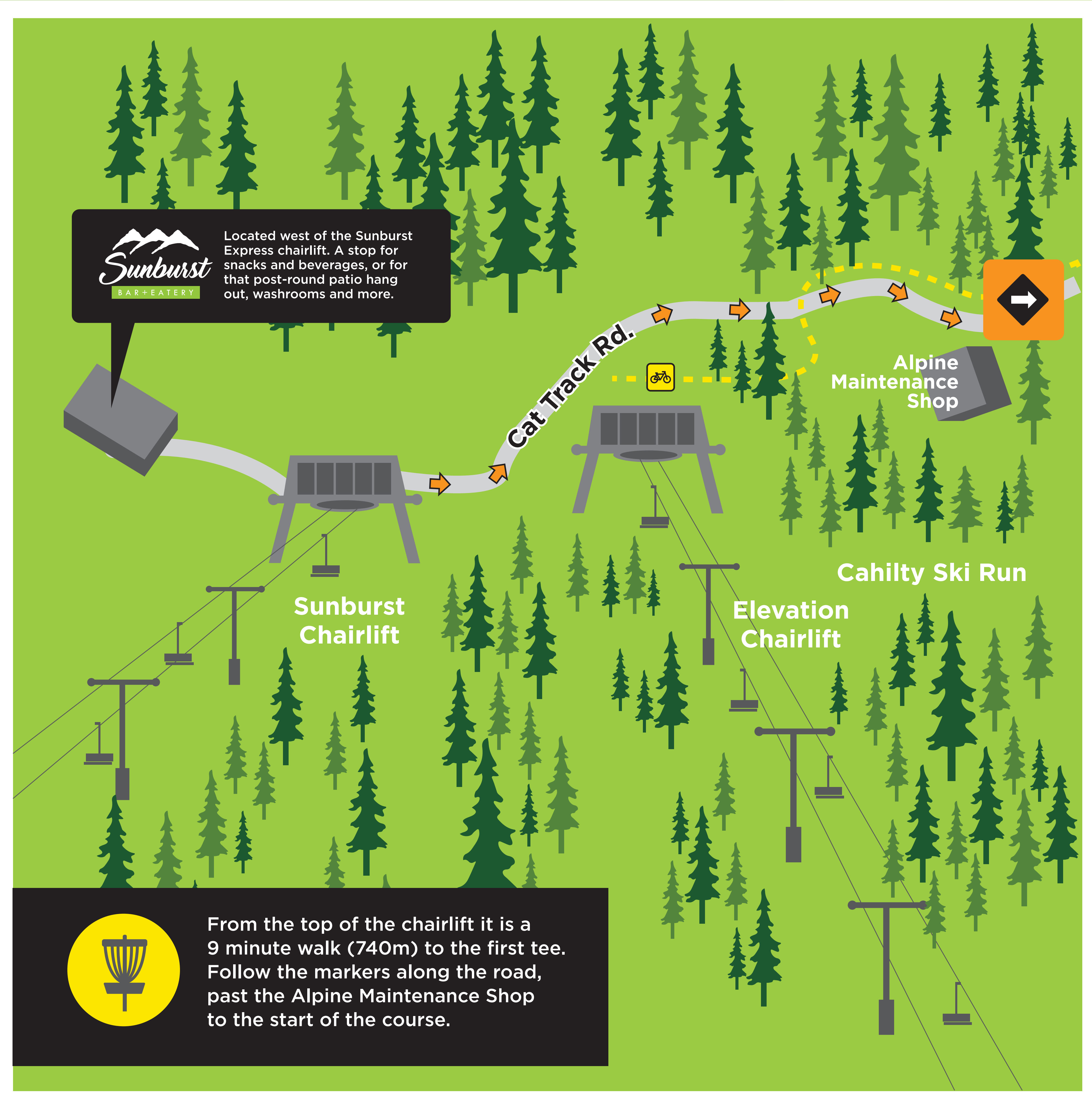


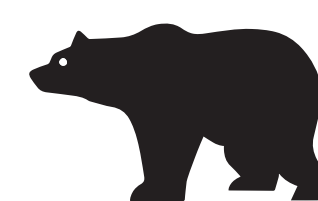
# SUN PEAKS DISC GOLF COURSE



## SAFETY



Bike trails run near the course; observe posted signage and be aware of bikers travelling at speed.



If you do see a bear, remain calm and keep your distance, back away slowly, do not run.



Wildlife roam these mountains, please keep your distance from all animals.



It is recommended to remain a minimum of 100 metres away.

**PLEASE OBEY WARNING SIGNS**  
Terrain beyond the AREA BOUNDARY is not patrolled. BIKING or HIKING is not recommended beyond this point. Please obey all signage and respect closures.  
**ON-HILL EMERGENCY: +1.250.578.5521 EMERGENCY: 911**

| HOLE         | 1  | 2  | 3  | 4  | 5   | 6  | 7  | 8  | 9  |
|--------------|----|----|----|----|-----|----|----|----|----|
| PAR          | 3  | 3  | 3  | 3  | 4   | 3  | 3  | 3  | 3  |
| DISTANCE (m) | 48 | 45 | 41 | 67 | 124 | 63 | 80 | 66 | 86 |