










SNOWSHOE MAP

2023  2024

SNOWSHOE TRAIL LEGEND

-  Valley Interpretive Trail (Beginner) 1.5km
-  Morrisey Ridge Trail (Beginner/Intermediate) 3.0km
-  Valley View Loop (Intermediate) 5.0km
-  McGillivray Lake Outpost Trail (Advanced) 3.0km
-  McGillivray Lake Outpost Return Trail (Expert) 3.5km
-  Family Man Loop (Intermediate) 1.6km
Trail shared with Fat Bikes
-  Nordic/Fat Bike Ski Trails (NOT for snowshoeing)
-  Designated Snowmobile Route (NOT for snowshoeing)
-  Recommended Travel Direction

MASTER LEGEND

-  Parking
-  Trail Information
-  Chairlift
-  First Aid Clinic
-  Fire Department
-  Washrooms
-  Warming Hut
-  Road Crossing
-  Caution; Hill
-  Snowmobiles

SNOWSHOE RENTALS

Snowshoe rentals are available from the Activities Desk in the Village Day Lodge and from the East Village Centre. Tours can be booked at Activities Desk.

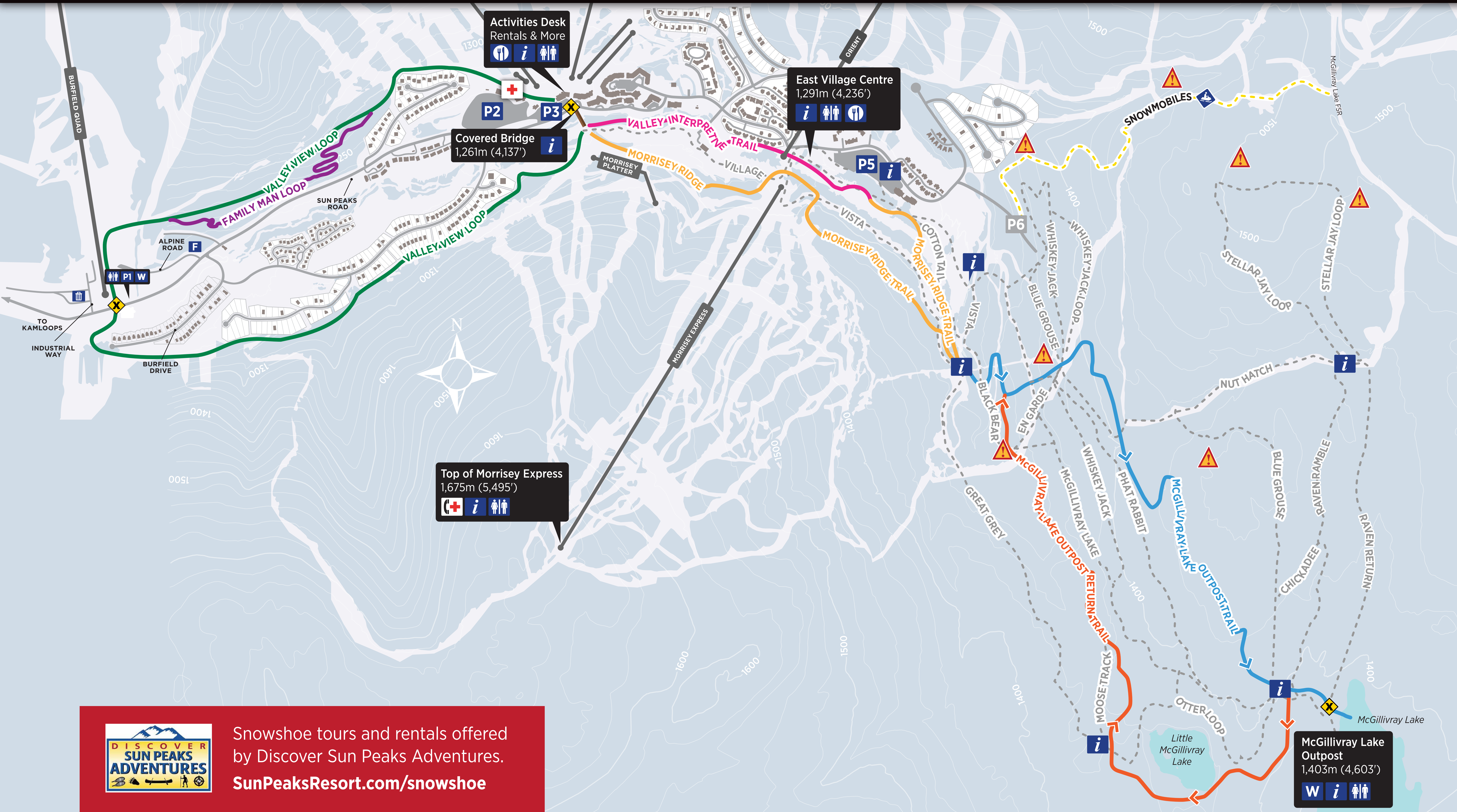
Snowshoe ticket is required. Available at the Activities Desk, the East Village Centre or online.

TRAIL SAFETY & ETIQUETTE

Discover Sun Peaks Adventures marks all trails with snowshoe signs and coloured flagging tape.

Trails are for snowshoeing only.

- Snowshoe trails are for daylight hours use only.
- Snowshoeing off the marked trails can get you lost and/or subject you to unmarked hazards.
- Do not leave garbage on the trails.
- Stay well off the side of any Nordic ski trail.
- When crossing Nordic ski trails avoid stepping in the groomed classic tracks.
- Always take water, food and extra clothes.



Snowshoe tours and rentals offered by Discover Sun Peaks Adventures.
SunPeaksResort.com/snowshoe

McGillivray Lake Outpost
 1,403m (4,603')
